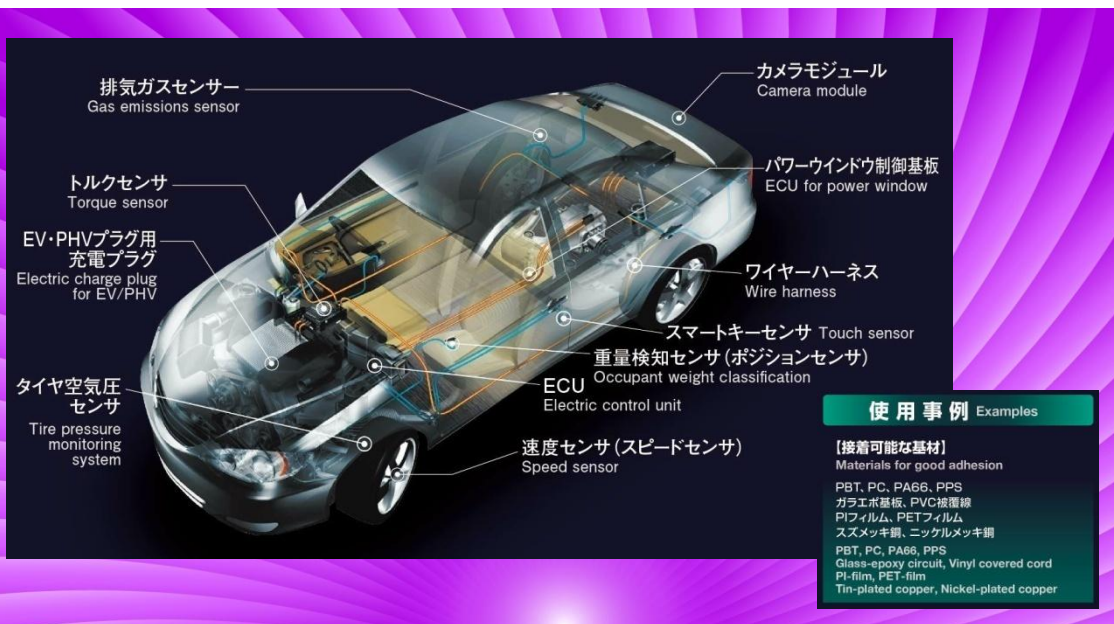


Injection molding apparatus best suited for Hot-melt Molding !

This is a proposal of an injection molding apparatus best suited for hot-melt molding. This molding apparatus is a collaborative product with Toyobo's hot-melt material 『VYLOSHOT』, and demonstrates its performance especially for high viscosity hot-melt materials. The hot-melt material is a material that easily deteriorates thermally, so it is best to use for an injection molding apparatus that heats and ejects one injection amount at every molding time without heating it for a long time.



Base machine: Nissei Jushi Kogyo, Co. Ltd.
Hybrid type
Compact Vertical Type Injection Molding
Apparatus 『STX series』

5 Big

Features of 『HM10Ni/20Ni』

1

Shut-off nozzle

When heating a low viscosity hot melt material, a droplet-like resin leakage phenomenon occurs from the nozzle tip during injection standby. To prevent this phenomenon, a shut-off function to interrupt the resin mechanically is equipped.

2

Significant energy saving

Because the servo motor is rotated as much as necessary and only when required, 40% of energy saving has been achieved comparing with the conventional hydraulic type. By which, wide injection range from low speed to high speed has been realized.

5

Excellent operability and workability

By combining the condition setting by touch panel and the machine operation by selector switch, operability was improved markedly. Since the work space is secured widely, especially the workability at the time of insert molding is excellent.

3

High response, High-speed injection

Through the development of hybrid pump System "X pump" combining 2 capacity switch pump and the electric servo motor, performance improvement by 1/2 in response rise time and 1.3 times in injection speed has been achieved comparing with the conventional hydraulic type.

4

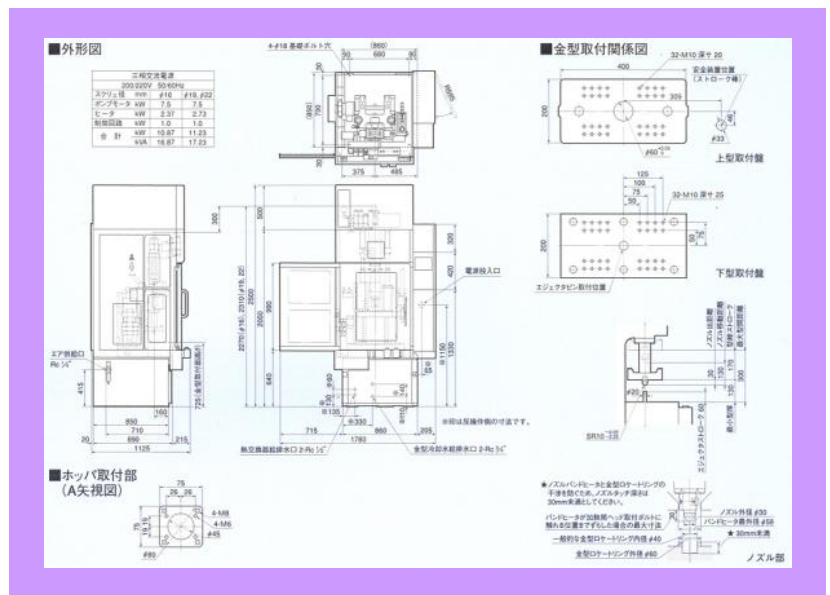
Space saving design

In order to maximize the area required for automation, we sought to save space of molding apparatus main body. As the result, a compact design that consciously considered plumbing saving and wiring saving has been realized.

1

Specifications of 『HM-10Ni』

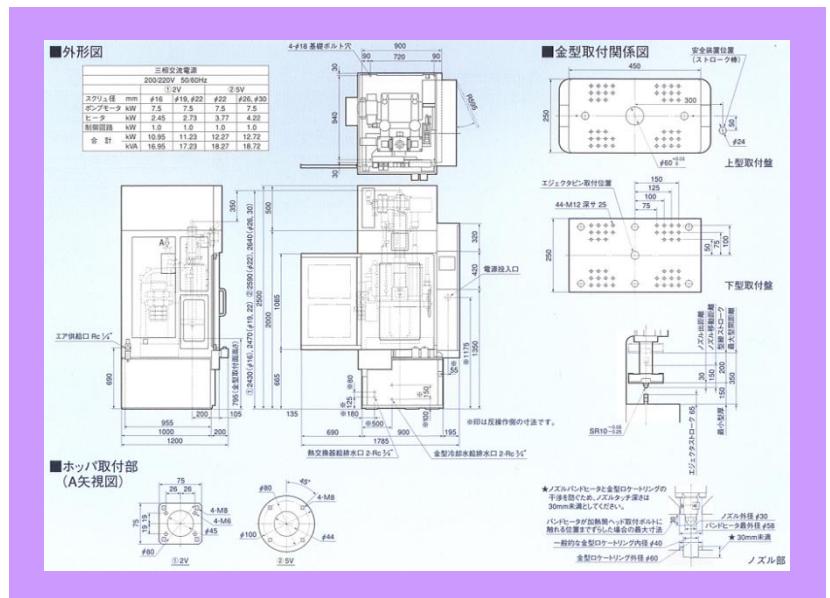
Item	Specification
Screw diameter	19mm
Injection volume	18cm ³
Injection pressure	186Mpa
Injection rate	42cm ³ /s
Injection speed	150mm/s
Screw rotation speed	0 ~ 280rpm
Mold clamp force	94kN
Mold clamp stroke	170mm
Minimum mold thickness	130mm
Dimension of Tie-plate	400×200mm (H×V)
Ejector stroke	60mm
Machine dimension	1.3×1.78×2.5m (L×W×H)
Machine weight	1.2t



2

Specification of 『HM-20Ni』

Item	Specification
Screw diameter	22mm
Injection volume	35cm ³
Injection pressure	256Mpa
Injection rate	42cm ³ /s
Injection speed	110mm/s
Screw rotation speed	0 ~ 210rpm
Mold clamp force	193kN
Mold clamp stroke	200mm
Minimum mold thickness	150mm
Dimension of Tie-plate	450×250mm (H×V)
Ejector stroke	65mm
Machine dimension	1.2×1.79×2.5m (L×W×H)
Machine weight	2.1t



⚠ When using this product, please read the operation manual carefully.

『ELEBON』 is a trademark or registered trademark of products using the energization diffusion (heating) bonding technology.

Manufacturer

ECO-A Co. Ltd.

〒302-0127

Ibaraki-ken, Moriya-shi, Matsugaoka,1-18-3

TEL : 0297-44-9247 FAX : 0297-44-9248



Please look at the information on the Internet.
<http://www.eco-a2010.co.jp/>